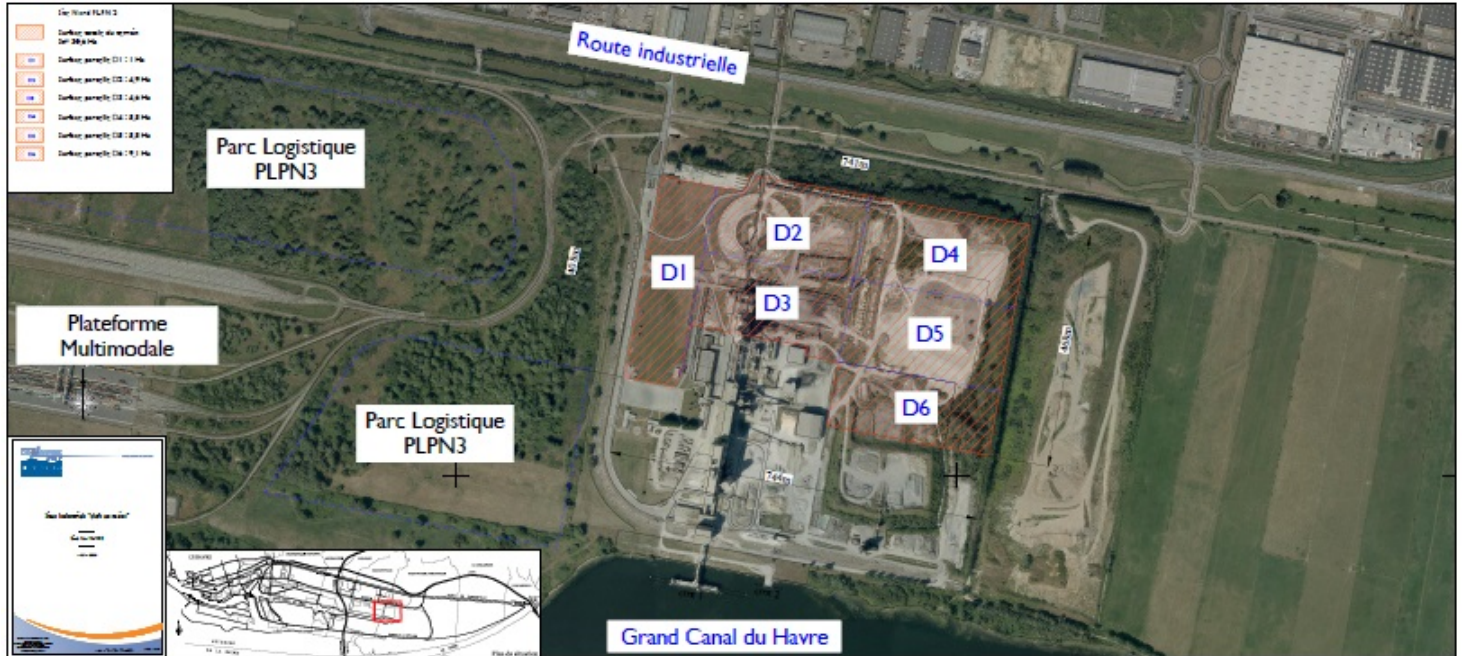


TERRAIN NORD EST GRAND CANAL

A site proposed by :



Description

Areas

- Total area : 300000 sqm
- Divisible : yes
 - Surface minimale : 1 sqm



Location

City : Le Havre
 Intercommunity : Le Havre Seine Métropole

Conditions of occupancy

Connections

- Heavyweight access
- Close to A131-A29 highways

IMPLANTEO PARTNERS





- Close to multimodal hub
- Rail junction possible

IMPLANTEO PARTNERS

